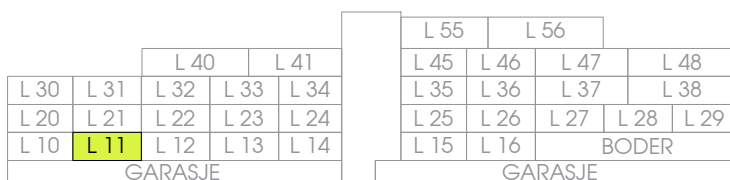
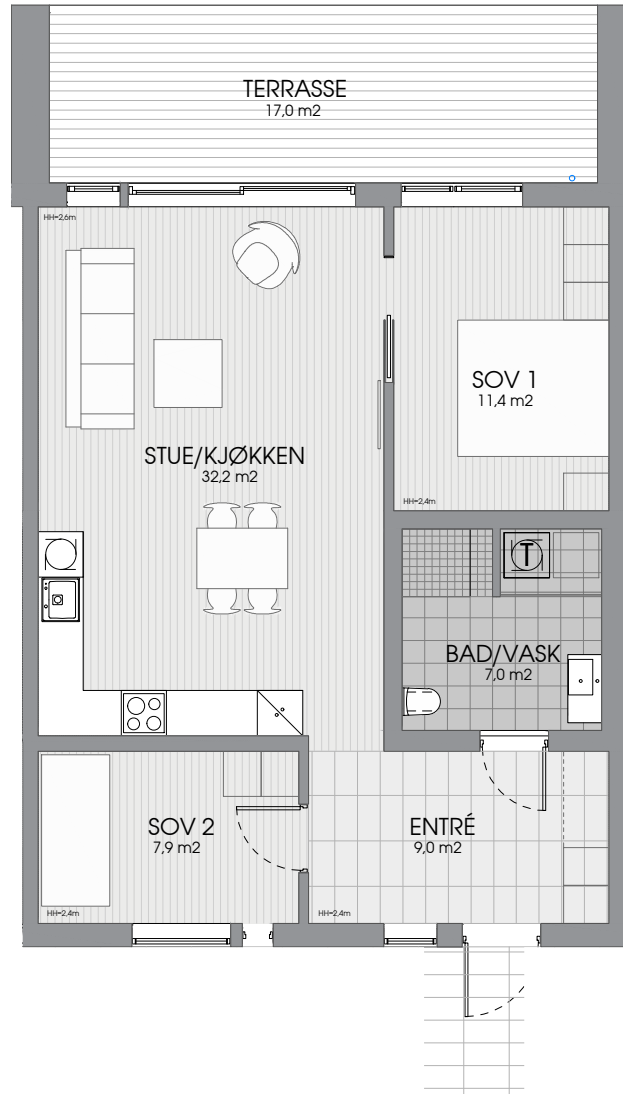


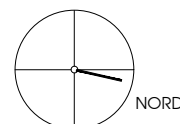
# LØNVARDS TOPPEN

OPPDATERT 24.01.22



## LEILIGHET L11 TYPE D

AREAL BRA: 71,2 m2  
 P - AREAL: 71,2 m2  
 SPORTSBOD: 5,0 m2  
 TERRASSE: 17,0 m2



0 0.2 1 2 5 10M

1:100